

# DUFFY

## AUCTIONEERS

VALUERS, SALES & LETTING AGENT  
MIPAV, PSRA Lic. No. 001325

For Sale By Private Treaty

73 Whatley Hall  
Clonee  
Dublin 15



Duffy Auctioneers take great pleasure in bringing to the market this truly magnificent top floor apartment in the highly regarded development of Whatley Hall, Clonee, Dublin 15. Number 73 is a spacious one-bedroom top floor apartment with spaciouly well-proportioned accommodation of c. 58 sq.m. The many excellent features include a large double bedroom, fully fitted kitchen with granite worktop and a superb south facing balcony that is not overlooked. This stunning apartment is situated in a well-established location convenient to shops, schools and the N3/M50 road network. Accommodation briefly comprises of entrance hall with wooden floor, living/dining room with wooden floor and patio door to the south facing balcony. The superb, fitted kitchen has granite worktop with ample wall and floor units. The large double bedroom had fitted wardrobes and a wooden floor and is located next to a fully tiled family bathroom with bath and shower over. Outside: Large south facing green area with ample parking. This property has to be seen to be fully appreciated and is sure to appeal to a wide audience. Viewing is highly recommended.

**A.M.V. €235,000**

Main Street, Blanchardstown, Dublin 15 Tel: 01 8237087 Fax: 01 8237088 E-Mail:sales@duffyauctioneers.ie

DISCLAIMER: All details are published for guidance purposes only, and are thought to be correct. Their accuracy cannot be guaranteed and they do not form part of any contract. None of the details contained in the document as to the property is to be relied on as statement of fact. All maps and drawings are for identification purposes only and are not to scale. Please note we have not tested any apparatus, fixtures, fittings, or services. Interested parties must undertake their own investigation into the working order of these items. PSRA no. 001325. M.I.P.A.V.

## Features

Stunning one bed top floor apartment.

In Showroom Condition with many extras included in sale.  
Superb living room with wooden floor and door to the south facing balcony.

Large fully fitted kitchen with granite worktop and tiled floor.

Dining area with wooden floor.

Superb Spacious Double Bedroom with views over the landscaped garden.

Family Bathroom fully tiled with bath and shower over.

Gas Central Heating.

Double Glazing Throughout

Intercom System

Ample parking to the front of the complex.

Large south facing balcony, not overlooked.

Prime residential location just a short walk from schools and shops.

## Entrance Hall

Entrance Hall  
(2.27m x 2.23m)

Entrance hallway with wooden floor and storage room.

## Living Room

Living room  
(7.05m x 3.83m)

Stunning living room with wooden floor and patio doors to large south facing balcony and most importantly not overlooked.

## Dining Room

With wooden floor

## Kitchen

Kitchen/Dining area  
(2.76m x 1.81m)

Fully fitted kitchen with granite worktop and tiled splash back, stainless steel sink unit, oven and hob, extractor fan, and fridge / freezer.

Dining area with wooden floor

## Outside Features

South facing balcony not overlooked.



### Bedroom 1

Master Bedroom  
(4.91m x 3.02m)

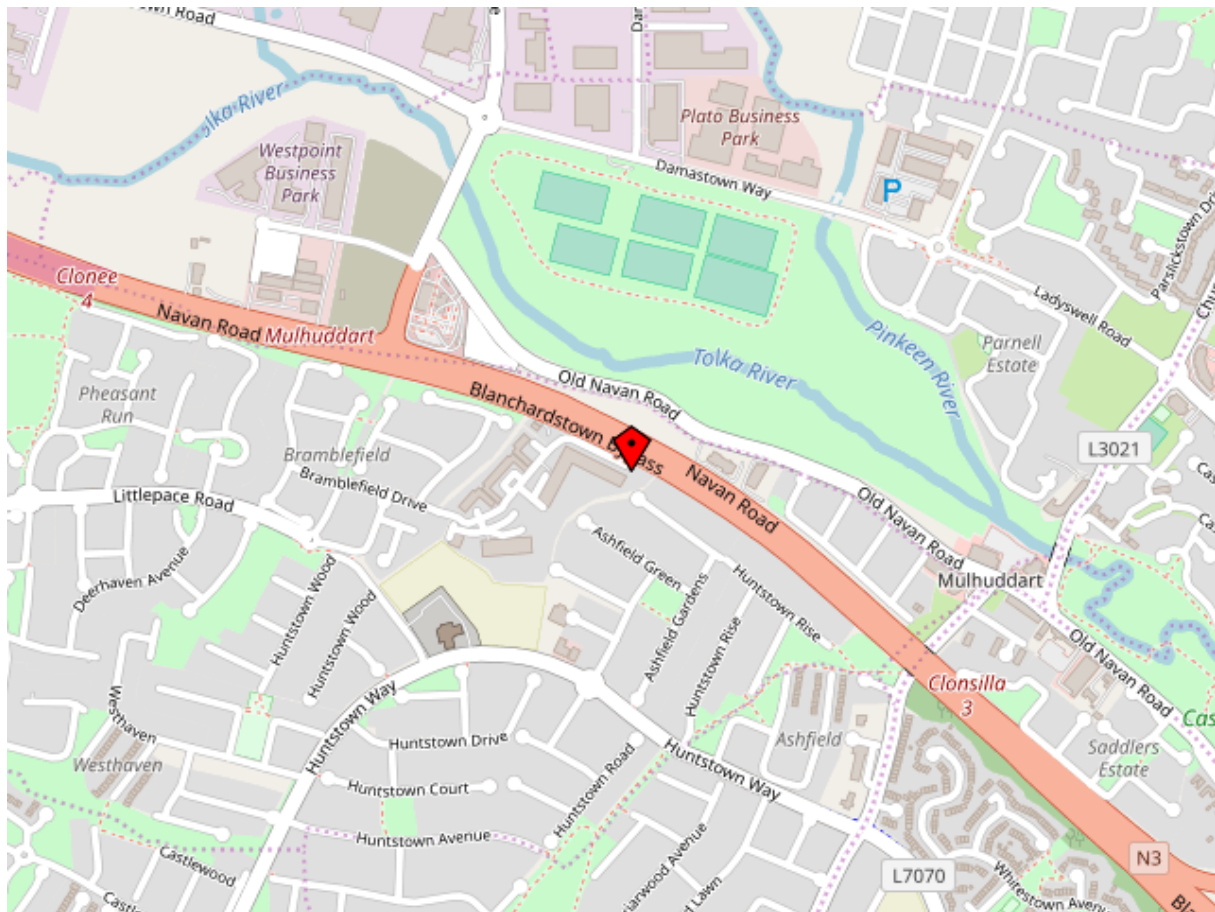
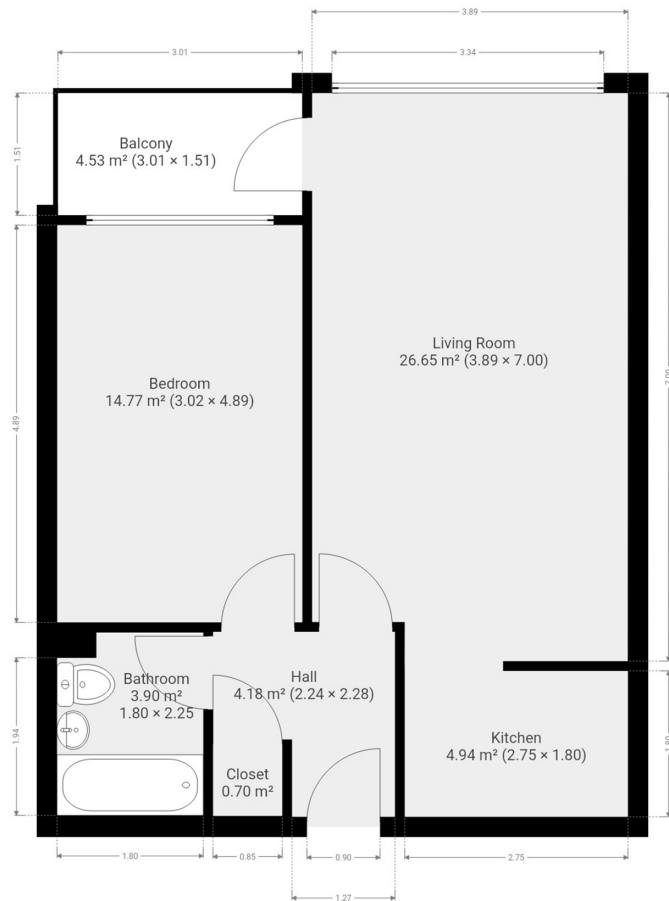
Double bedroom with wooden floor and fitted wardrobes.  
Double sockets and uPVC window.

### Bathroom

Bathroom  
(2.26m x 1.82m)

Fully tiled floor, bath with shower over, tiled walls, extractor fan, and w.c. w.h.b.





Main Street, Blanchardstown, Dublin 15 Tel: 01 8237087 Fax: 01 8237088 E-Mail:sales@duffyauctioneers.ie

DISCLAIMER: All details are published for guidance purposes only, and are thought to be correct. Their accuracy cannot be guaranteed and they do not form part of any contract. None of the details contained in the document as to the property is to be relied on as statement of fact. All maps and drawings are for identification purposes only and are not to scale. Please note we have not tested any apparatus, fixtures, fittings, or services. Interested parties must undertake their own investigation into the working order of these items. PSRA no. 001325. M.I.P.A.V.